

HUNTERS®

HERE TO GET *you* THERE



Longmore Road

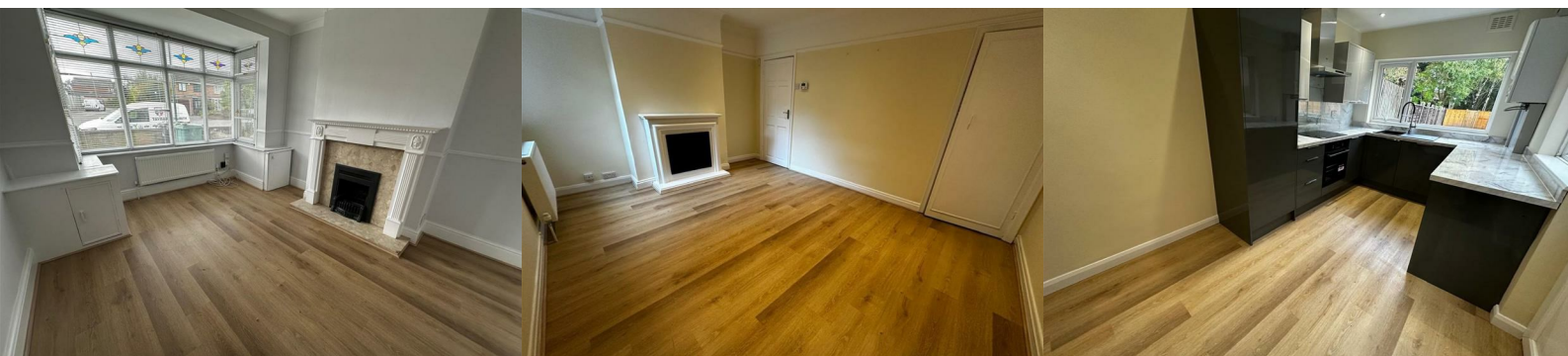
Shirley, Solihull, B90 3EP

£1,395 Per Calendar Month

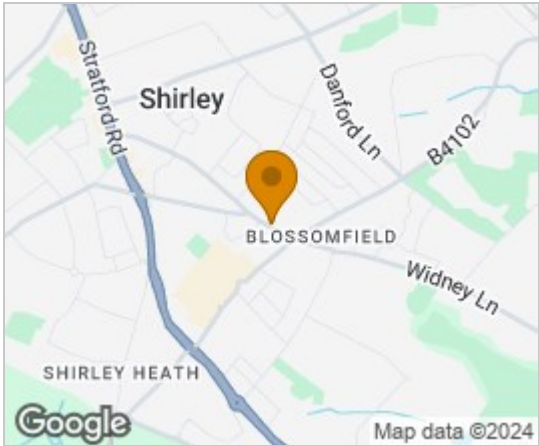


DEPOSIT ALTERNATIVE OPTION AVAILABLE ON THIS PROPERTY

This lovely redecorated spacious terrace property is ideally situated on Longmore Road, near many local amenities within Sears Retail Park and along the Stratford Road. Available unfurnished, the property offers; hallway, dining/sitting room, lounge, brand new kitchen with integrated dishwasher, three good size bedrooms, brand new family bathroom with shower over bath, front and rear gardens. On road parking only, gas central heating and double glazing. Available NOW.



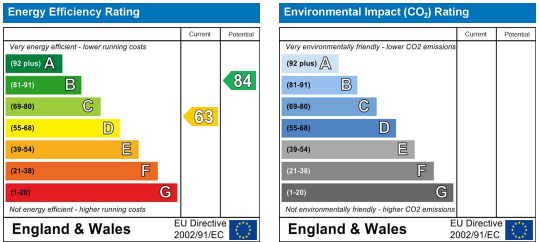
Area Map



Floor Plans



Energy Efficiency Graph



These particulars are intended to give a fair and reliable description of the property but no responsibility for any inaccuracy or error can be accepted and do not constitute an offer or contract. We have not tested any services or appliances (including central heating if fitted) referred to in these particulars and the purchasers are advised to satisfy themselves as to the working order and condition. If a property is unoccupied at any time there may be reconnection charges for any switched off/disconnected or drained services or appliances - All measurements are approximate.

THINKING OF SELLING? If you are thinking of selling your home or just curious to discover the value of your property, Hunters would be pleased to provide free, no obligation sales and marketing advice. Even if your home is outside the area covered by our local offices we can arrange a Market Appraisal through our national network of Hunters estate agents.